

Pneumatically bond-injection **BMI-30**

Additives improvement by bond-injection

Accurate dosing

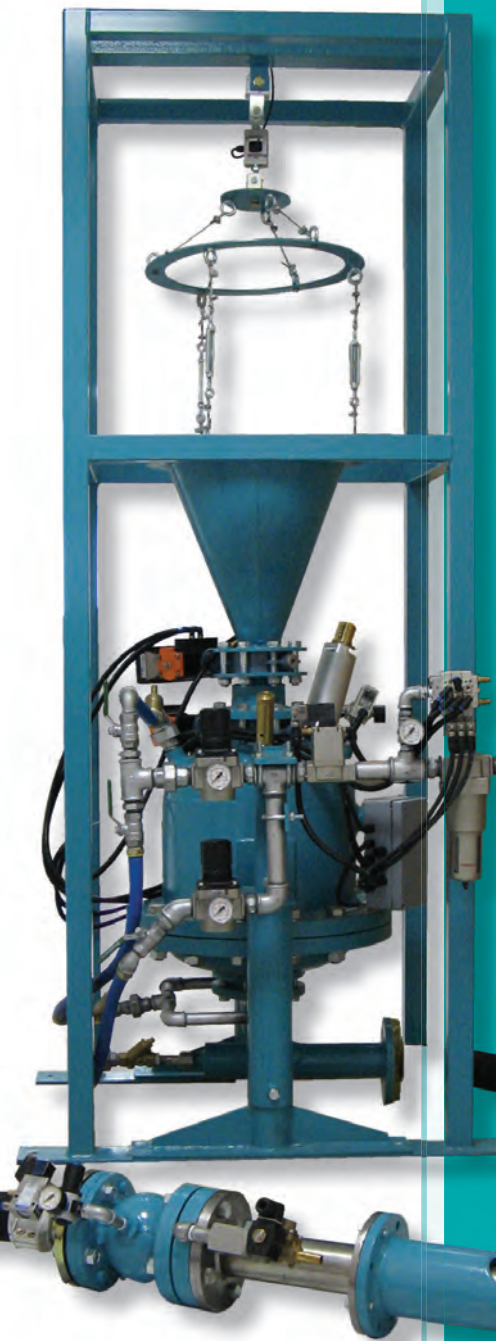
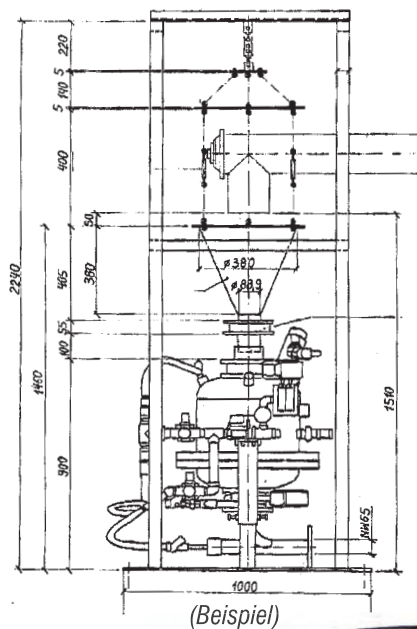
Economic utilisation of the mixing period

DESCRIPTION

Especially for fast running mixers, the pneumatic addition of bentonite, carbon dust and dry new-sand is a big advantage.

The additives are evenly compounded in the mixer and can be added to the batch very quickly. Even in short mixing periods, the bond-injection provides homogeneously additives.

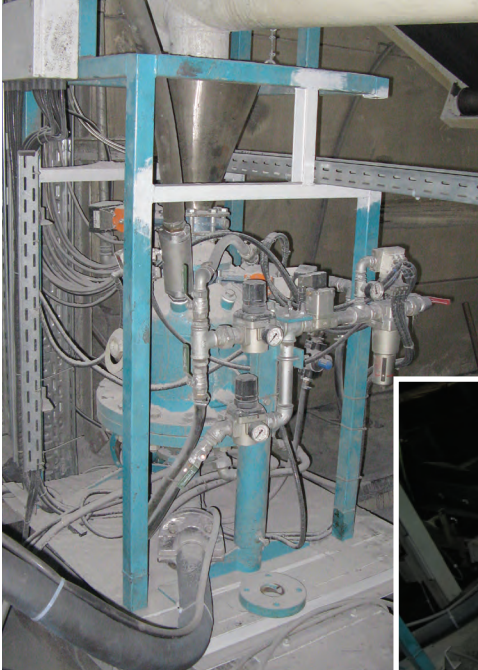
We offer all components of the pneumatically bond-injection in required size. We await your requests.



Pneumatical bond-injektion **BMI-30**

The pneumatical bond-injection provides

....SENDER (INSTALLATION SIZE DEPENDS ON QUANTITY) MOUNTED IN A FRAMEWORK



with all necessary

- Input locking-cap-
- Pressure limiting valve-
- Pressure reducing-
- Pressure switch-

AIR INJECTION UNIT

with the components

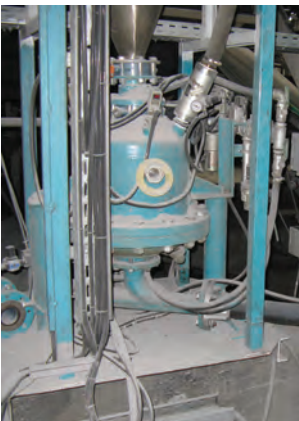
- Tube NW 65 (max.length 5m,- further lengths optional)
- Squeezing valve-
- Secondary air nozzle
- Guide pipe-
- Air injection pipe-



WEIGHING UNIT

with freely suspended funnel or as a 3-point hopper.
Prepared for the filling with one or two screw feeder

- Load-cells depending on total weight as tensile or compressive force-
- Outlet cap-
- Flexible adapter attached to the sender-



CONTROL

fitted into a Rittal-case with the dimensions 500 x 500 x 200 mm
moufed an the framework

Hardware: B&R Power Panel mit touch screen 5.7" (other in request) and all necessary / O's for the sender function and the controlling of the system. The weighing electronics are integrated
Power supply 230 V AC / 24 V DC, Main control switch, Emergency off switch

The complete system is prepared for ready to use.